

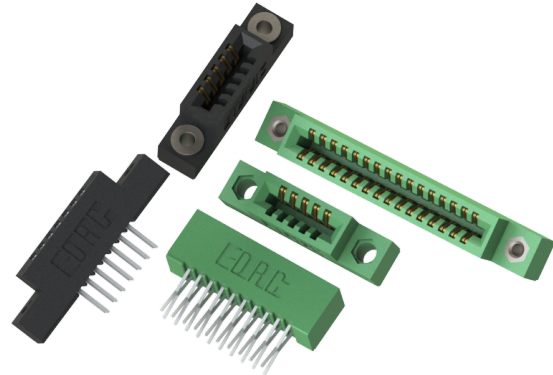
341/391 SERIES



Card Edge Connectors 0.100" (2.54mm) Pitch

Features

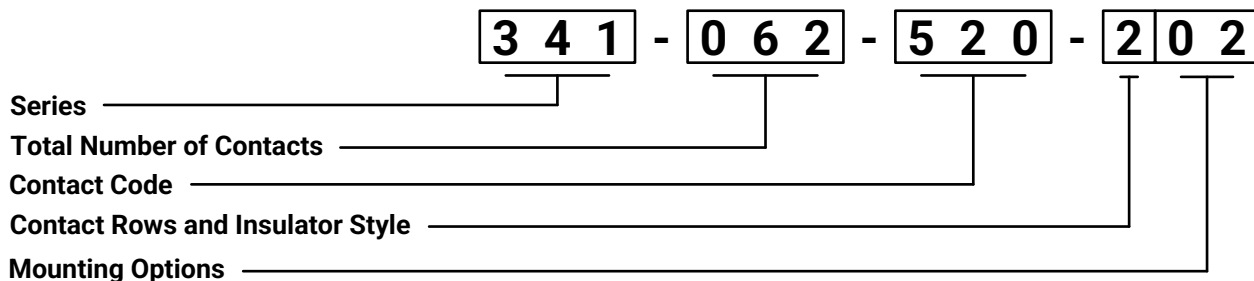
- 0.100" (2.54mm) contact spacing x 0.140" (3.56mm) row spacing
- Accepts 0.062" (1.57mm) nominal thickness P.C. board
- Low profile insulator body, 0.437" (11.10mm)
- P.C. tail, wire hole, and extender board bends termination types
- Single or dual row configurations
- Variety of mounting options
- Accepts between contact and in-contact polarizing keys
- RoHS Compliant
- UL Certified



Specifications

Insulator Material	Diallyl Phthalate (341 Series), Thermoplastic (391 Series), UL 94V-0
Contact Material	Copper Alloy
Contact Plating	Gold plating on contact area, Tin plating on tail area
Current Rating	3 Amps
Contact Resistance	10 Milliohms maximum
Dielectric Withstanding Voltage	1200 V AC rms at sea level between adjacent contacts
Insulation Resistance	5000 Megaohms minimum
Operating Temperature	-40°C to +105°C
Insertion Force	16 oz (4.45 N) maximum per contact pair when tested with .070" (1.78mm) thick gauge
Withdrawal Force	1 oz (0.28 N) minimum per contact pair when tested with .054" (1.37mm) thick gauge

Example Part Number



*** Please see next page for options

341/391 SERIES



Card Edge Connectors 0.100" (2.54mm) Pitch

Series	Description		
341	Diallyl Phthalate, Green		
391	Thermoplastic, Black		
Total Number of Contacts	Description		
005, 006, - 060	Single Row (Note 1)		
010, 012 - 120	Double Row (Even Numbers Only) (Note 1)		
Contact Code	Description	Tail Size	Tail Length (G)
500 (Note 2)	Wire Hole	.050 x .013 (1.27 x 0.33)	.220 (5.59)
520	P.C.Tail	.025 x .013 (0.64 x 0.33)	.125 (3.18)
521	P.C.Tail	.025 x .013 (0.64 x 0.33)	.260 (6.60)
522	P.C.Tail	.025 x .013 (0.64 x 0.33)	.375 (9.53)
524	P.C.Tail	.025 x .013 (0.64 x 0.33)	.100 (2.54)
555	Extender Board Bend	.050 x .013 (1.27 x 0.33)	See Page 4
556	Extender Board Bend	.025 x .013 (0.64 x 0.33)	See Page 4
560	Extender Board Bend	.025 x .013 (0.64 x 0.33)	See Page 4
Contact Rows and Insulator Style	Description		
1	Single Row		
2	Double Row		
Mounting Options	Description		
01	No Mounting Lug		
02	Ø.128" (Ø3.25mm) Mounting Holes		
03	Ø.116" (Ø2.95mm) I.D. Floating Eyelets		
04	Ø.156" (Ø3.96mm) Mounting Holes		
07	M3-0.5 Metric Threaded Inserts		
08	#4-40 Unified Threaded Inserts		

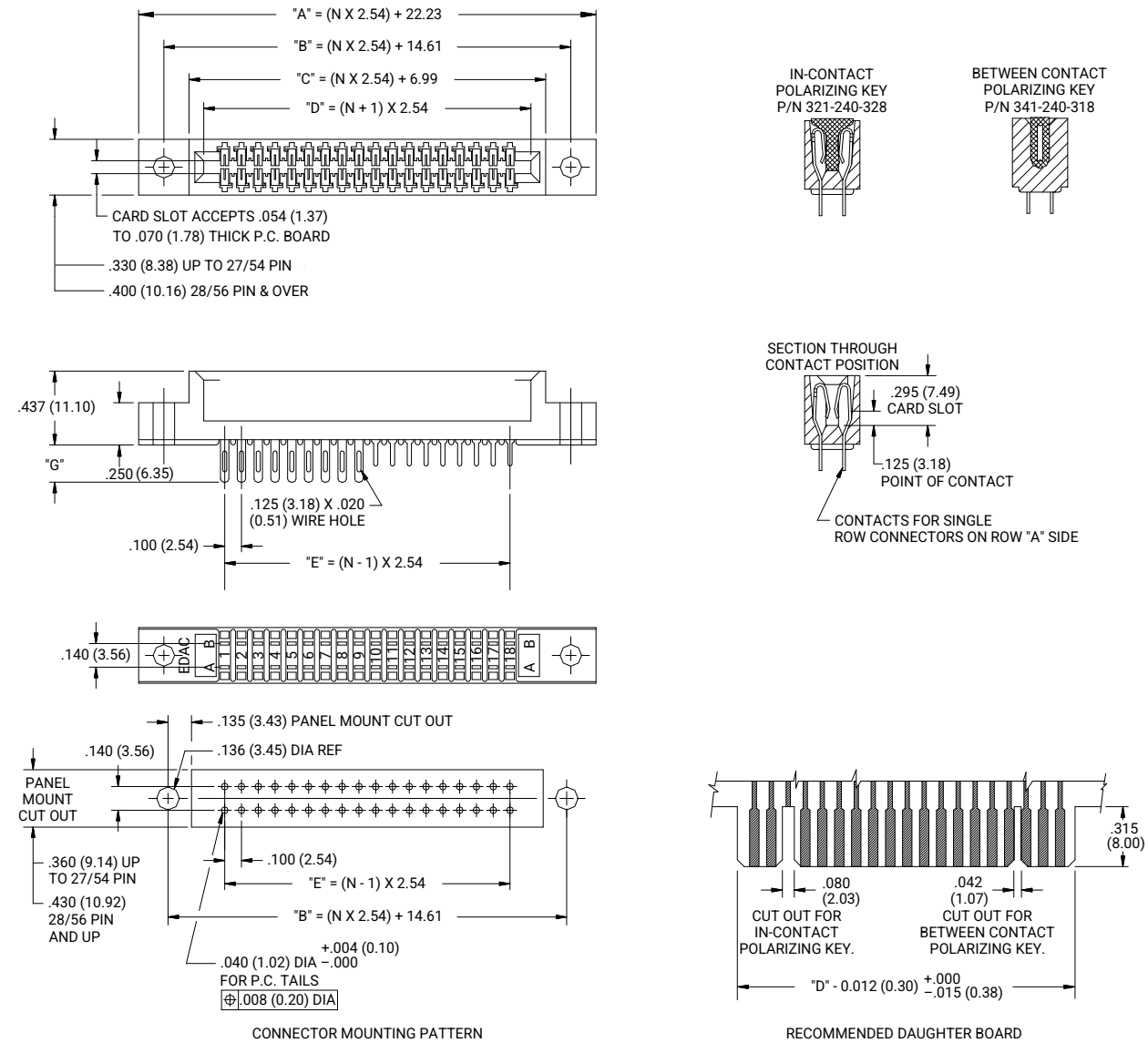
Ordering Notes:

1. All connector sizes up to 60 contacts for single row and up to 120 contacts for double row are available upon request.
2. Contact code 500 wire hole option will be supplied with green DAP material (341 Series) only.

341/391 SERIES



Card Edge Connectors 0.100" (2.54mm) Pitch



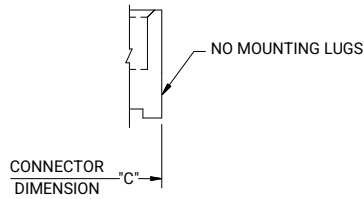
Number of Contacts		Dimension A		Dimension B		Dimension C		Dimension D		Dimension E	
Single	Double	Inch	mm	Inch	mm	Inch	mm	Inch	mm	Inch	mm
5	10	1.375	34.93	1.075	27.31	0.775	19.69	0.600	15.24	0.400	10.16
6	12	1.475	37.47	1.175	29.85	0.875	22.23	0.700	17.78	0.500	12.70
10	20	1.875	47.63	1.575	40.01	1.275	32.39	1.100	27.94	0.900	22.86
15	30	2.375	60.33	2.075	52.71	1.775	45.09	1.600	40.64	1.400	35.56
18	36	2.675	67.95	2.375	60.33	2.075	52.71	1.900	48.26	1.700	43.18
22	44	3.075	78.11	2.775	70.49	2.475	62.87	2.300	58.42	2.100	53.34
25	50	3.375	85.73	3.075	78.11	2.775	70.49	2.600	66.04	2.400	60.96
28	56	3.675	93.35	3.375	85.73	3.075	78.11	2.900	73.66	2.700	68.58
30	60	3.875	98.43	3.575	90.81	3.275	83.19	3.100	78.74	2.900	73.66
36	72	4.475	113.67	4.175	106.05	3.875	98.43	3.700	93.98	3.500	88.90
40	80	4.875	123.83	4.575	116.21	4.275	108.59	4.100	104.14	3.900	99.06
43	86	5.175	131.45	4.875	123.83	4.575	116.21	4.400	111.76	4.200	106.68
50	100	5.875	149.23	5.575	141.61	5.275	133.99	5.100	129.54	4.900	124.46
60	120	6.875	174.63	6.575	167.01	6.275	159.39	6.100	154.94	5.900	149.86

Note: All connector sizes up to 60 contacts for single row and up to 120 contacts for double row are available upon request.

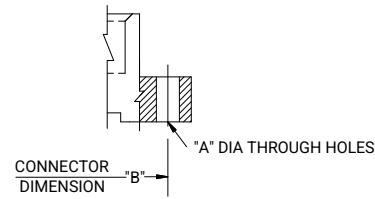
341/391 SERIES



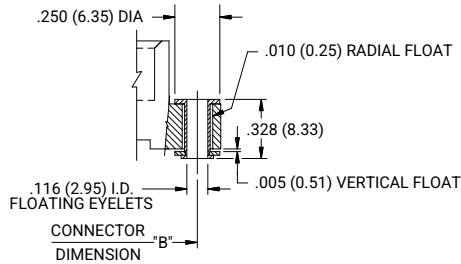
Card Edge Connectors 0.100" (2.54mm) Pitch



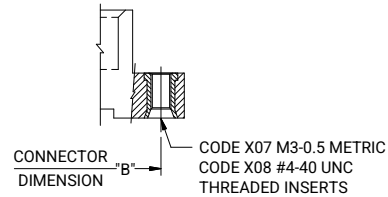
MOUNTING OPTION
CODE X01



MOUNTING OPTION
CODES X02 AND X04

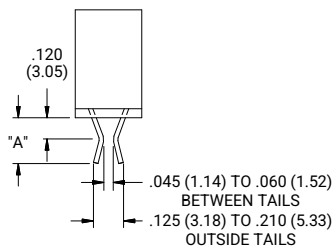


MOUNTING OPTION
CODE X03

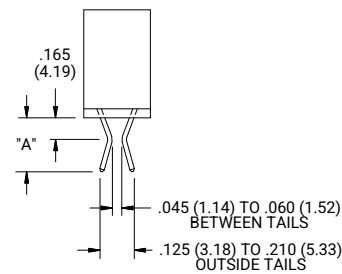


MOUNTING OPTION
CODES X07 AND X08

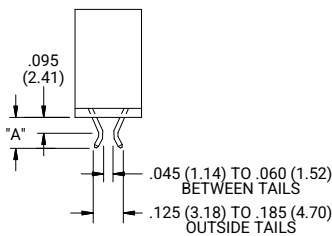
CODE X02 AND X04 - THROUGH MTG. HOLES		
	CODE X02	CODE X04
"A" DIA.	0.128 (3.25)	0.156 (3.96)
CODE X07 AND X08 - THREADED INSERTS		
	CODE X07	CODE X08
INSERT	M3-0.5	#4-40 UNC



CONTACT CODE 555
BEND USES WIRE HOLE
CONTACTS



CONTACT CODE 560



CONTACT CODE 556

MTG. OPTION	A
555	0.205 (5.21)
556	0.235 (5.97)
560	0.365 (9.27)